

- (1) 72"W x 36"D Single Pedestal Desk (Wood-Look)
  - High Pressured Laminate Top, Wood- Look
  - 3MM PVC rim to match in square profile
  - Full Modesty Panel
  - Full-Depth BBF Pedestal, Locking
  - Square pulls, Brushed Aluminum Finish

- (1) 48"W x 24"D Return (Wood-Look)
  - High Pressured Laminate Top, Wood- Look
  - 3MM PVC rim to match in square profile
  - Wire Manager or Center Grommet, Black Finish
  - Power Strip with wire management

- (2) Guest Chair with Arms
  - Fully Upholstered Seat and Back in Textile Grade 7
  - Wood Frame

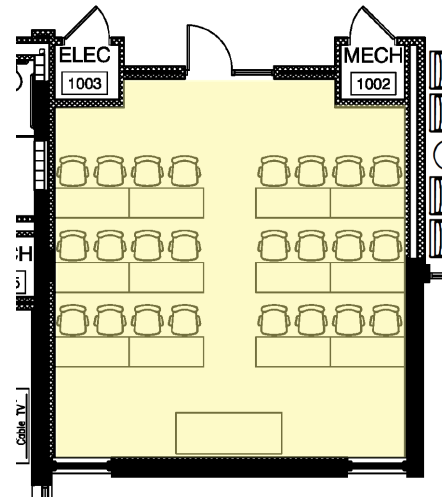
- (1) High-Back Task Chair
  - Adjustable lumbar support
  - Adjustable seat depth
  - Adjustable seat height
  - Height adjustable arms
  - Black nylon base and frame
  - Enhanced Synchro mechanism
  - 5 arm swivel base with carpet casters or hard floor casters
  - Black Mesh fabric
  - Black Vinyl or Fabric in Textile Grade 2

- (1) 72"W x 24"D Single Pedestal Credenza (Wood-Look)
  - High Pressured Laminate Top, Wood- Look
  - 3MM PVC rim to match in square profile
  - Full-Depth FF Pedestal, Locking
  - Square pulls, Brushed Aluminum Finish

- (3) 36"W x 18"H Storage Overhead Hinged Doors (Wood-Look)
  - High Pressured Laminate Top, Wood- Look
  - 3MM PVC rim to match in square profile
  - Doors, Locking
  - Square pulls, Brushed Aluminum Finish
  - 25" W Tasklight, Black

- (3) 36" W x 37" H Tackboard (Textile)
  - Match fabric wire manager
  - Fully wrapped panel in Textile Grade 7

## A: Private Office

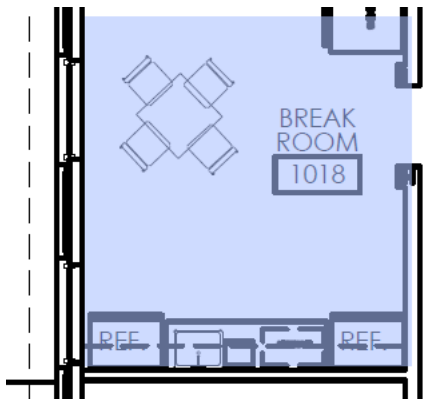


- (1) 72"W x 24"D Storage Credenza (Wood-Look)
  - High Pressured Laminate Top, Wood- Look
  - 3MM PVC rim to match in square profile
  - Doors, Locking
  - Square pulls, Brushed Aluminum Finish
  - Adjustable Shelf with Grommet
  - Grommet cutout in Back
  - Ventilation Kit
  - Wire Feed Cutout for End User Equipment

- (12) 72"W x 24"D Flip/Nest Training Table (Wood-Look)
  - High Pressured Laminate Top, Wood- Look
  - 3MM PVC rim to match in square profile
  - Modesty Panel
  - Ganging Bracket
  - Integrated HDMI/USB/Power Hub
  - Wire Management

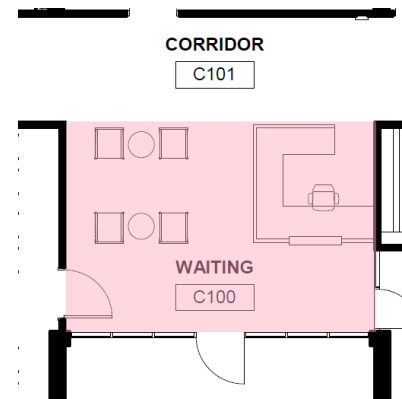
- (24) Mesh Back Armless Nesting Chair
  - Mesh Back with Upholstered seat in Textile Grade 5
  - Flexible Back
  - Chrome or Brushed aluminum leg finish
  - Casters for carpet or hard floor surfaces

## B: Large Collaboration Space



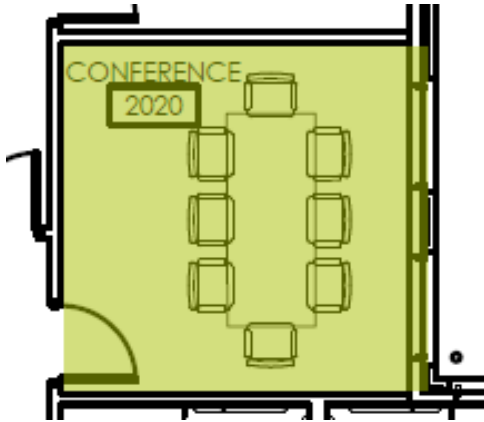
- (1) 30" Square x 29"H
  - High Pressured Laminate Top, Wood Look
  - Matching vinyl bullnose edge
  - Column with X Base, Brushed aluminum leg finish
  - Adjustable glides
- (4) Poly Armless Stack Chairs
  - Poly seat and back
  - Flexible Back
  - 4 -legged back with glides to accommodate flooring material
  - Chrome or Brushed aluminum leg finish

## C: Break Room



- (4) Lounge Chair with Arms
  - Fully Upholstered Seat and Back in Textile Grade 9
  - Veneer Wood legs, walnut stain
  - Adjustable glides
- (2) 24" Diameter End Table, Exposed Wood Frame
  - Veneer Wood, walnut stain
  - Eased edge veneer, match top
  - Veneer straight leg, match top
  - Adjustable glides

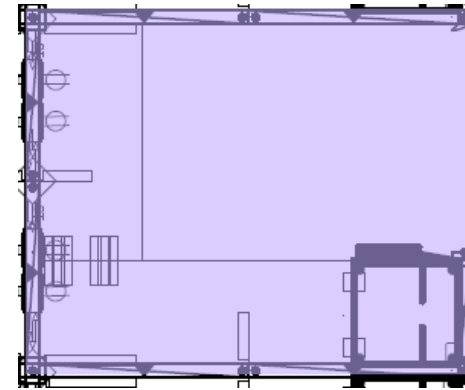
## D: Lounge



- (1) 96"W x 48"D Conference Table
- High Pressured Laminate Top, Wood- Look
  - 3MM PVC rim to match in square profile
  - Integrated HDMI/USB/Power Hub
  - Wire Management
  - Cut Out to coordinate with End User's Equipment
  - Slab legs with Power/Wiring Capability (Laminate Finish)

- (8) High-Back Conference Chair
- Adjustable lumbar support
  - Adjustable seat depth
  - Adjustable seat height
  - Height adjustable arms
  - Black nylon base and frame
  - Enhanced Synchro mechanism
  - 5 arm swivel base with carpet casters or hard floor casters
  - Black Mesh fabric
  - Black Vinyl or Fabric in Textile Grade 5
  - Casters for carpet or hard floor surfaces

## E: Conference Room



- (8) High-Back Task Chair
- Adjustable lumbar support
  - Adjustable seat depth
  - Adjustable seat height
  - Height adjustable arms
  - Black nylon base and frame
  - Enhanced Synchro mechanism
  - 5 arm swivel base with carpet casters or hard floor casters
  - Black Mesh fabric
  - Black Vinyl or Fabric in Textile Grade 5
  - Casters for carpet or hard floor surfaces
- (8) 6' x 8' Systems Workstations
- 48"W x 24"D fixed height worksurface in high pressured laminate top, wood- look
  - 96" W x 24"D fixed height worksurface in high pressured laminate top, wood-look
  - 3MM PVC rim to match in square profile
  - Wire Manager or Center Grommet, Black Finish
  - Full-Depth BBF pedestal, locking and wood-look
  - Power Strip with wire management
  - Square pulls, Brushed Aluminum Finish
  - Modular Panel Fabric in Textile Grade 7 monolithic in appearance
  - Power Infrastructure to be hardwired or Plug in
  - Modular Panel Size: 66"-68" High with varying width
  - (2) 36"W x 18" H Storage Overhead Hinged Doors
  - (2) 36" x 37"H Tackboard (Textile)
  - Match fabric wire manager
  - Fully wrapped panel in Textile Grade 7
  - 25" Wide Tasklight

## F: Workstations